

Rotary Tillers



Standard-duty • Medium-duty • Heavy-duty

Rugged, reliable rotary tillers for small gardens and large seedbeds.

When it comes to quality, durability, and performance, you can count on Frontier. Our rotary tillers are perfect for you and your land. Whether you want to till a garden or prepare ground for seed, sod, or plants, we've got a rotary tiller to meet your needs. We offer 13 models in widths ranging from 42 to 121 inches, with standard-, medium-, and heavy-duty units available.

Designed for large gardens, small to medium farms, vineyards, orchards, and vegetable crop operations, these Frontier Rotary Tillers are built sturdy for dependable use and feature chain or gear drives. Chain-driven tillers have easy-to-reach tensioners for both manual and automatic adjustments; gear-driven machines do not require tensioning. A slip clutch on most models protects the drive system from overloading when working tough soil.

Standard, heat-treated steel tines mulch through thick residue and create the ideal soil texture for planting. Each model is equipped with hard-surfaced tines for working in abrasive soil or other high-wear applications. And for extra tough conditions, tungsten-coated tines are available.

Frontier Rotary Tillers are backed with a one-year warranty¹ and one of the best dealer networks in the industry — John Deere. To help you choose the right Frontier Rotary Tiller, talk to your John Deere dealer, your exclusive distributor of Frontier Equipment.

U.S.A. www.BuyFrontier.com
Canada www.BuyFrontier.ca

Details – Rotary Tiller



All models are iMatch™ or Quick-Coupler compatible...making hookup a breeze. iMatch converts your tractor's 3-point hitch to fixed hooks and attaching points for an easy connection. (iMatch hitch sold separately.)



Working depth can be adjusted by the height of the skids, which is easily done with the adjustment bracket.



Adjustable offset allows the tiller to be used in a central or side position (pictured) with respect to the tractor's wheel track allowing you to till closer to existing plants and into deep corners. The chain-supported tailgate is self-leveling.

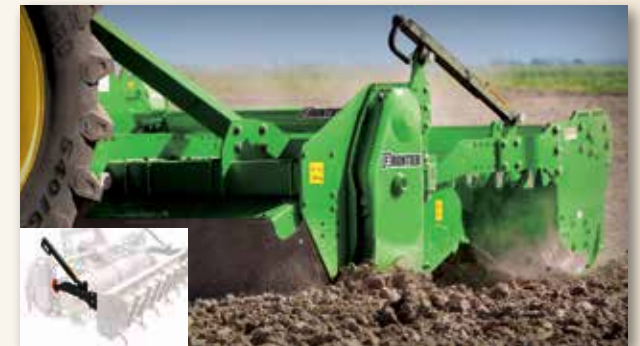
The helical rotor design decreases the horsepower required to drive the unit.



Start the workday off right. Put a Frontier Rotary Tiller in your land to till a garden or prepare ground for seed, sod, or plants. Whether you're working in smooth, loose soil or tough, thick residue, these tillers are ready to work when you are.



On the RT22 and RT23 Series, double springs provide consistent down pressure on the tailgate to level the tilled soil. Adjusting the height of the tailgate is easy: just remove the bolts and raise the tailgate to one of five settings. Use the low setting for a more level finish.



On the RT22 and RT23 Series, roller adjustment is easy using the two mechanical jacks placed on the sides of the rollers. Use a lower setting for more firming action, ideal for controlling wind erosion.



The Frontier Rotary Tillers are offered in three high-performance series – standard-duty RT11, medium-duty RT12 and RT22, and heavy-duty RT23 Series, with 13 models to choose from. They're compatible with a wide range of tractor sizes, from 10 PTO horsepower compact utility tractors, to larger 130 horsepower tractors.



Heavy-duty wear shields on the RT23 Series help protect the gearcase from abrasion and premature wear.



Get The Most Out Of Your Land

Specifications

Model	RT1142	RT1149	RT1157	RT1165	RT1173	RT1181
Working width	42 in. (1.07 m)	49 in. (1.24 m)	57 in. (1.45 m)	65 in. (1.65 m)	73 in. (1.85 m)	81 in. (2.06 m)
Tractor hp (minimum-maximum)	25 hp (19 kW) max	25 hp (19 kW) max	25 - 40 hp (19 - 30 kW)	30 - 40 hp (22- 30 kW)	45 - 60 hp (34 - 45 kW)	50 - 60 hp (37.- 45 kW)
Depth control	Adjustable skid shoes	Adjustable skid shoes	Adjustable skid shoes	Adjustable skid shoes	Adjustable skid shoes	Adjustable skid shoes
Weight with skid shoes	293 lb. (133 kg)	323 lb. (147 kg)	480 lb. (218 kg)	534 lb. (242.2 kg)	761 lb. (345 kg)	810 lb. (367 kg)
Gearbox speed	Single	Single	Single	Single	Single	Single
Side drive	Chain ASA 80	Chain ASA 80	Chain ASA 80	Chain ASA 80	Gear	Gear
Tractor PTO speed	540 rpm	540 rpm	540 rpm	540 rpm	540 rpm	540 rpm
Hitch compatibility	Category 1 iMatch	Category 1 iMatch	Category 1, 2 iMatch & Quick-Coupler	Category 1, 2 iMatch & Quick-Coupler	Category 1, 2 iMatch & Quick-Coupler	Category 1, 2 iMatch & Quick-Coupler
Offset	4 in. (102 mm)	8 in. (203 mm)	15.5 in. (393.7 mm)	18.1 in. (459.7 mm)	–	–
Maximum working depth	6.3 in. (160 mm)	6.3 in. (160 mm)	7 in. (178 mm)	7 in. (178 mm)	8.7 in. (221 mm)	8.7 in. (221 mm)
Blade type	C	C	C	C	C	C
Blade per flange	4	4	6	6	6	6
Rotor flanges	5	6	7	8	9	10
Rear door support	Chain	Chain	Chain	Chain	Single spring	Single spring
Warranty ¹	1 year	1 year	1 year	1 year	1 year	1 year

Model	RT1265	RT1273	RT2283	RT2293	RT2383	RT2308	RT2310
Working width	65 in. (1.65 m)	73 in. (1.85 m)	83 in. (2.11 m)	93 in. (2.36 m)	82 in. (2.08 m)	101 in. (2.56 m)	121 in. (3.07 m)
Tractor hp (minimum-maximum)	45 - 60 hp (33 - 44 kW)	50 - 80 hp (37 - 60 kW)	60 - 100 hp (45 - 75 kW)	70 - 100 hp (52 - 75 kW)	80 - 130 hp (60 - 97 kW)	80 - 130 hp (60 - 97 kW)	100 - 130 hp (75 - 97 kW)
Depth control	Adjustable skid shoes	Adjustable skid shoes	Adjustable skid shoes	Adjustable skid shoes	Adjustable skid shoes	Adjustable skid shoes	Adjustable skid shoes
Cage roller	–	–	Optional - manual or hydraulic	Optional - manual or hydraulic	Optional - manual or hydraulic	Optional - manual or hydraulic	Optional - manual or hydraulic
Weight with skid shoes	616 lb. (279 kg)	968 lb. (439 kg)	1,512 lb. (686 kg)	1,692 lb. (767 kg)	1,745 lb. (778 kg)	1,827 lb. (829 kg)	2,072 lb. (940 kg)
Weight with roller	–	–	1,937 lb. (879 kg)	2,116 lb. (960 kg)	1,837 lb. (873 kg)	2,363 lb. (1,072 kg)	2,669 lb. (1,211 kg)
Gearbox speed	Single	Single	Multi	Multi	Multi	Multi	Multi
Side drive	Chain ASA 100	Gear	Gear	Gear	Gear	Gear	Gear
Tractor PTO speed	540 rpm	540 rpm	540 rpm	540 rpm	540 rpm/1000 rpm	540 rpm/1000 rpm	540 rpm
Hitch compatibility	Category 1, 2 iMatch & Quick-Coupler	Category 2 Quick-Coupler	Category 2 Quick-Coupler	Category 2 Quick-Coupler	Category 2 Quick-Coupler	Category 2 Quick-Coupler	Category 2 Quick-Coupler
Offset	–	–	–	–	–	–	–
Maximum working depth	7.9 in. (201 mm)	8.7 in. (221 mm)	10.6 in. (269 mm)	10.6 in. (269 mm)	10.6 in. (269 mm)	10.6 in. (269 mm)	10.6 in. (269 mm)
Blade type	C	L	L	L	L	L	L
Blade per flange	6	6	6	6	6	6	6
Rotor flanges	8	7	8	9	8	10	12
Rear door support	Chain	Single spring	Double spring	Double spring	Double spring	Double spring	Double spring
Warranty ¹	1 year	1 year	1 year	1 year	1 year	1 year	1 year

¹Hour and/or usage limitations may apply. See Warranty for new John Deere Agricultural Equipment or contact your local dealer for details.

Note: models/items may not be exactly as shown.

This literature has been compiled for worldwide circulation. While general information, pictures and descriptions are provided, some illustrations and text may include finance, credit, insurance, product options and accessories NOT AVAILABLE in all regions. PLEASE CONTACT YOUR LOCAL JOHN DEERE DEALER FOR DETAILS. Frontier Equipment reserves the right to change specifications, design and price of products described in this literature without notice. John Deere, the leaping deer symbol, and John Deere's green and yellow trade dress are the trademarks of Deere & Company. Copyright 2016, Frontier Equipment.



U.S.A.
Canada

www.BuyFrontier.com
www.BuyFrontier.ca