

WE'RE PRO

Technology That Equals Solutions

Current John Deere AMS Products



Universal 4640

the latest redesign and improved operating experience for legacy John Deere tractor and mixed-fleet operators loaded with the following benefits:

- A quickly learnable display resulting in reduced training, less expensive downtime, and fewer operator mistakes
- Improved data capture and collection capabilities – providing more accurate Section Control performance and documentation
- An expanding suite of Precision Ag applications - including performance and usability enhancements in applications such as AutoTrac™ assisted steering system, Section Control, documentation, and Wireless Data Transfer (WDT)

JD Link Connect

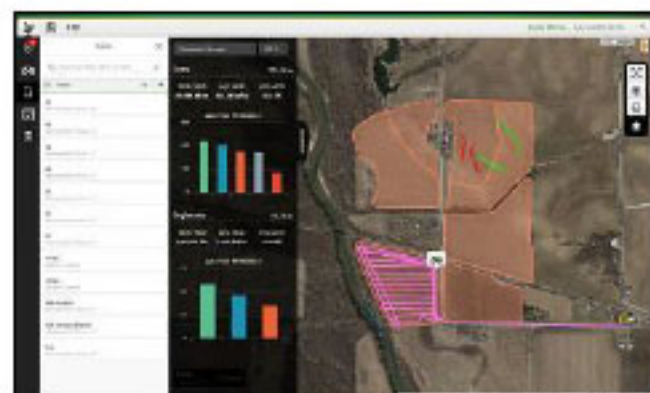
With JDLink Connect you get steady, automatic flow of agronomic data between your machines and the devices you use to manage your operation, so you can make sound, timely decisions for your farm- wherever, whenever.

StarFire 6000 Receiver

- Get started faster with improved satellite pull in performance.
- Maximize uptime to keep a job moving.
- Introducing all new SF3 correction signal with 1.2 in accuracy and in season repeatability.

JD Operations Center

- Analyze data for insights to take action
- Remotely manage machines and operators
- Collaborate with staff and partners
- Connected software applications
- Optimize in-field work



Other Products:

- RTK Towers
- Wireless Data Transfer
- Product Training
- Pop up fertilizer kits
- Non-Deere Solutions for guidance



JD Rate Controller 2000

- Simultaneous liquid and dry product control
- Automatic rate control
- Field documentation
- Map-Based prescriptions
- JD Section Control (activation required)



HarvestLab 3000

HarvestLab 3000 enables real-time constituent's measurements of corn, silage, and grass during the harvest when installed on a John Deere self-propelled forage harvester. As a stationary unit, the HarvestLab 3000 is also able to measure the constituents in ensiled corn or grass silage.

- One sensor, two applications**
- Real-time ingredient measurements on-the-go
 - ore accurate yield and ingredient documentation
 - Automated site-specific documentation
 - Improved web user interface for stationary application



JD Auto-Trac

- Increase profitability and reduce overlap
- Reduce operator fatigue and time spent in each field
- Reduce soil compaction and passes

Ask us about Auto-Trac Universal or Auto-Trac Controller which are products that offer JD guidance for mixed fleets.



JD Section Control

- Automatically control implement sections
- Improve efficiency by reducing overlap, input costs, and operator stress
- ISOBUS implement compatibility
- Control multiple operations simultaneously
- Versatile with different equipment and operations



We can also provide services and solutions for Non-Deere equipment. Call one of our Solutions Specialists today to see what LandPro Equipment can do to help you improve accuracy, save money, and improve data management.

Keith Conway- Manager

kconway@landproequip.com

Cell: 585-703-9628

Brock Cummins

IS Specialist - Western Territory

bcummins@landproequip.com

Cell: 585-993-7613

Amanda Spence

IS Specialist - Eastern Territory

aspence@landproequip.com

Cell: 585-315-5910



JOHN DEERE



NEW YORK
ALEXANDER.....(585) 501-1670
AVON.....(585) 226-9680
BROCKPORT.....(585) 637-3700
CLYMER.....(716) 355-4236
FALCONER.....(716) 665-3110
HALL.....(585) 526-6325

MACEDON.....(585) 425-4428
OAKFIELD.....(585) 948-5261
SAVANNAH.....(315) 365-2888
SPRINGVILLE.....(716) 592-4058
WHEATFIELD.....(716) 731-1330

PENNSYLVANIA
CENTRE HALL.....(814) 364-1421
EDINBORO.....(814) 734-1552
FAIRMOUNT CITY.....(814) 764-5159
HALIFAX.....(717) 362-3132
HARRISBURG.....(717) 583-2101

NIFFLINTOWN.....(717) 436-5553
STONEBORO.....(724) 376-3740
WATSONTOWN.....(570) 538-3557
OHIO
EAST PALESTINE.....(330) 426-2166

LandProEquipment.com